

# Giti



## GitiSynergy<sup>H2</sup>

Combined with German Engineering and AdvanZtech, GitiSynergy H2 is designed for mid and high-range vehicles for a terrific experience of comfort, safety, long mileage, and fuel savings.


**Rim size:**

 14 - 19"

**Aspect Ratio:**

 50 - 70

**Max. speed:**

 210 - 300 km/h



	Size	Speed Rating	Load Index		Size	Speed Rating	Load Index
14	165/70R14	T	81	17	205/50R17	Y	93
	175/65R14	T	82		205/55R17	W	95
	185/60R14	H	82		205/55R17	Y	95
15	175/65R15	H	84	215/50R17	Y	95	
	185/55R15	H	82	215/55R17	H	98	
	185/60R15	H	88	*215/55R17	W	94	
	185/65R15	T	92	*215/60R17	H	96	
	185/65R15	T	88	*215/65R17	V	99	
	185/65R15	H	92	225/50R17	Y	98	
	185/65R15	H	88	225/55R17	V	97	
	195/50R15	V	82	225/55R17	Y	101	
	195/55R15	V	85	*225/60R17	V	99	
	195/60R15	H	88	225/65R17	V	102	
16	195/65R15	H	91	*235/55R17	V	99	
	195/65R15	H	95	235/65R17	V	108	
	195/65R15	V	91	18	*215/50R18	W	92
	175/60R16	H	82		*215/55R18	V	99
	185/50R16	H	81	*225/50R18	W	99	
	185/55R16	V	87	*225/55R18	V	98	
	195/50R16	V	88	*225/60R18	V	100	
	195/55R16	V	91	*235/50R18	V	97	
	205/55R16	V	91	*235/55R18	V	104	
	205/55R16	W	91	235/60R18	T	103	
	205/55R16	V	94	*235/60R18	W	107	
	205/55R16	H	91	255/55R18	T	105	
	205/60R16	V	96	19	*225/55R19	V	99
	205/60R16	H	96				
205/65R16	H	95					
215/55R16	W	97					
215/60R16	V	99					
*215/65R16	H	98					
225/55R16	W	99					

\* Sidewall with "SUV"



### LONGEVITY AND FUEL SAVINGS

- Optimized pattern block geometry & sequence for low noise and smooth riding
- Improved rolling resistance for lower emissions and fuel savings. RR label A in selected sizes



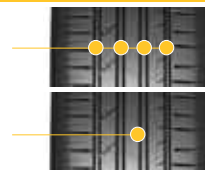
### COMFORT AND SAFETY

- Large center blocks with 3D tread grooves deliver the utmost grip for better driving safety even on the wettest roads
- The new Giti Super Flat Contact (SFC) design provides a greater contact area and prevents tire deformation, thus reducing the irregular wear of tire shoulder and improving tire life



### WET DRIVING STRENGTHS

- 4 Wide grooves for exceptional water drainage (3 grooves for section <195)
- Innovative new tread compound for extremely short braking distances - Wet Label A
- 4% improved aquaplaning resistance from previous generation



GitiSynergy<sup>H2</sup>